



19 Hoddle Drive LEOPOLD, VIC



4



2



2

The Ultimate Family Lifestyle!

Have you been dreaming of spacious family living? Showcasing three living zones, a superb outdoor entertaining area, and a generous backyard, this home has something to delight everyone!

The kitchen is a dream come true for entertainers with stone waterfall benchtops, a walk-in pantry and an impressive island bench/breakfast bar. Stainless steel appliances include a Bosch dishwasher and Westinghouse 900mm oven, gas cooktop, rangehood.

Morning light filters through the main bedroom, which will delight with dual walk-in robes and an en suite with large shower. Three additional bedrooms with built-in robes are tucked away in a separate wing, while the office makes working from home a breeze. The main bathroom, laundry with storage, powder room and separate toilet complete the layout. Other features include ducted heating (brand-new unit), a split-system air conditioner, ceiling f

Price: \$875,000 - \$920,000

Property Type: House

Land: 647 m2

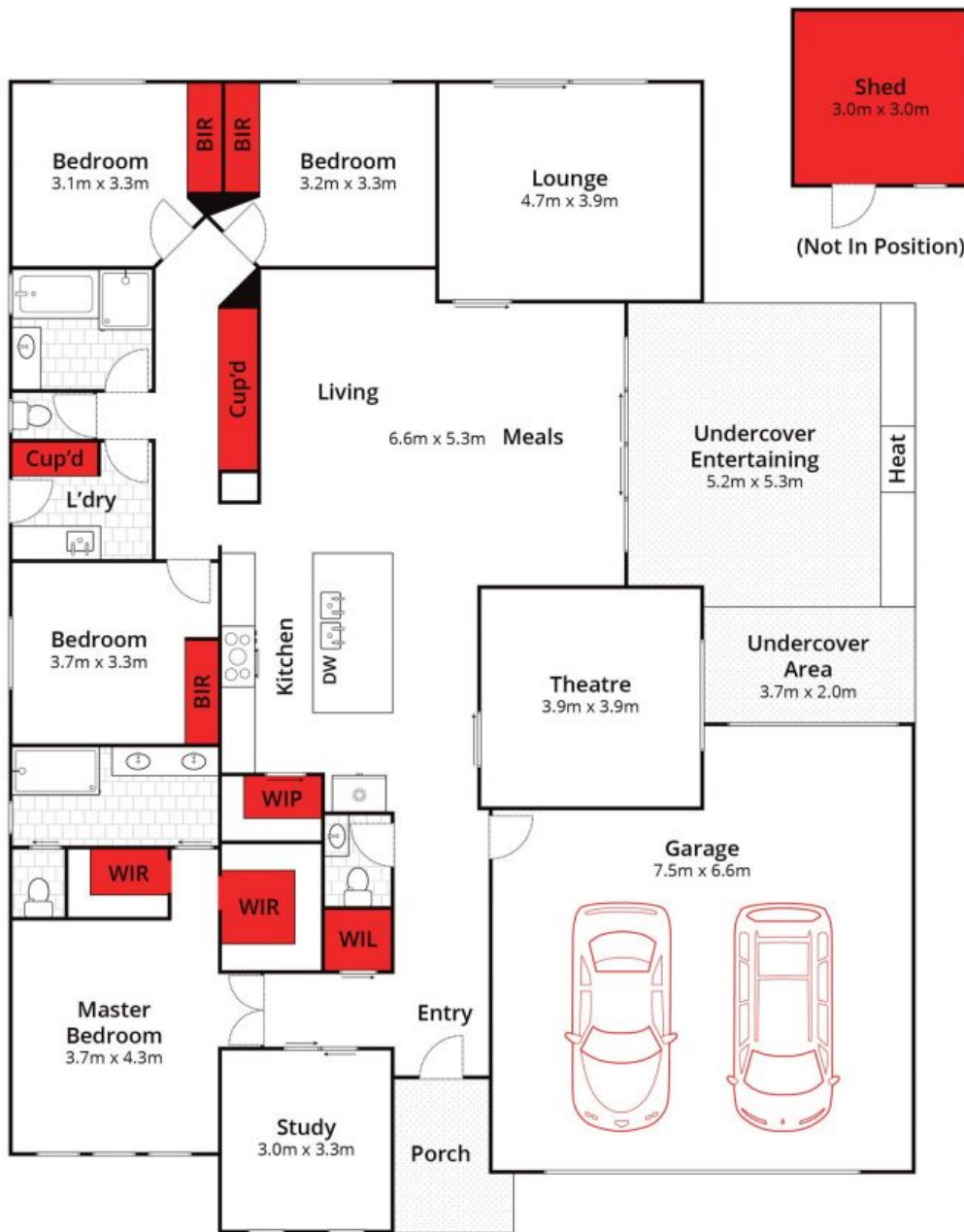
HAYDEN

David Pemberton **Karen Purcell**

0419874029

0448510143

david@haydenleopold.com.au karenp@haydenleopold.com.au



Whilst bwrn.com.au has made every attempt to ensure the accuracy of the floor plan contained here, measurements are approximate and no responsibility is taken for any error, omission, or mis-statement. This plan is for illustrative purposes only.



19 Hoddle Drive, Leopold

HAYDEN

19 Hoddle Drive

LEOPOLD, VIC