



82 Kensington Rd LEOPOLD, VIC



Potential Plus With Bay Views! \$500,000 ALL OFFERS CONSIDERED!

With a land size of approx 613m2 and boasting bay views from the upstairs level, this home is overflowing with infinite potential! Whether you plan to renovate or wipe the slate clean to build your dream family haven (STCA), the rewards are endless!

Price: \$450,000-\$500,000
Property Type: House
Land: 613 m2

HAYDEN

Karen Purcell

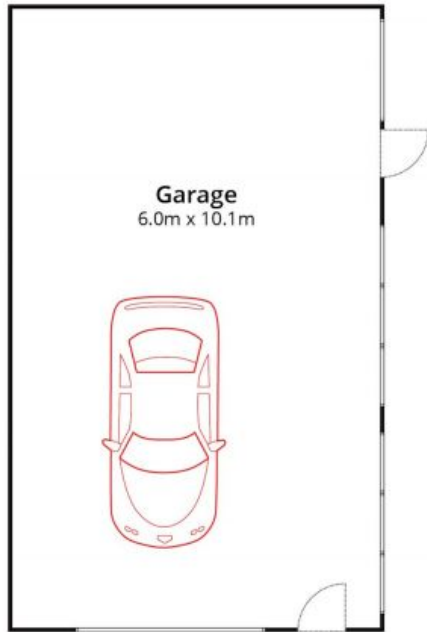
0448510143

karenp@haydenleopold.com.au

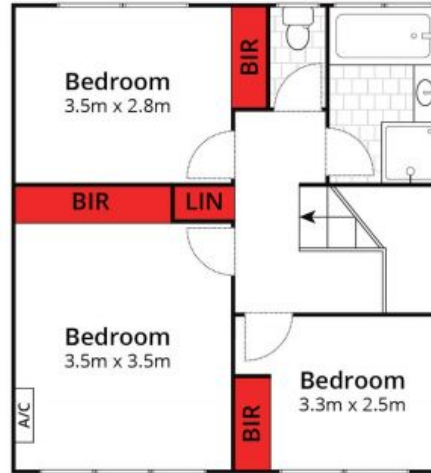
David Pemberton

0419874029

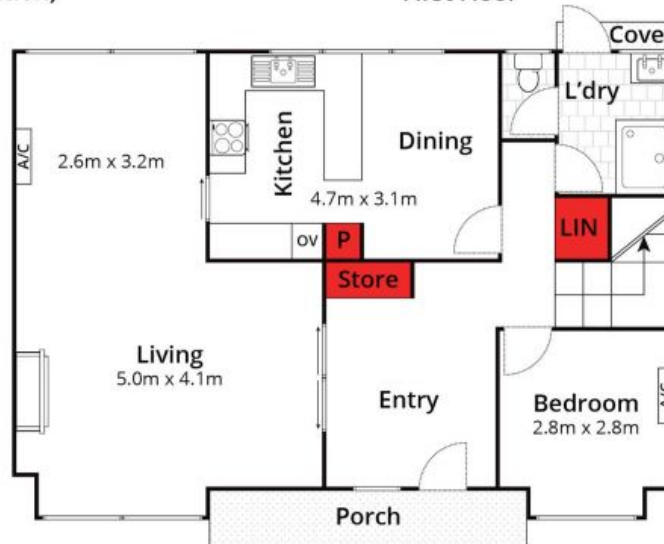
david@haydenleopold.com.au



(Not In Position)



First Floor



Ground Floor

Whilst bwrn.com.au has made every attempt to ensure the accuracy of the floor plan contained here, measurements are approximate and no responsibility is taken for any error, omission, or mis-statement. This plan is for illustrative purposes only.

82 Kensington Road, Leopold

HAYDEN

82 Kensington Rd

LEOPOLD, VIC