



133 Inshore Drive TORQUAY, VIC



3



2



2

## Exquisite Craftmanship ? Designed For Living

Striking Euro barn style streetscape, modern scandi finishes and custom-designed layout, maximising living space and accentuating natural light ? 133 Inshore Drive is an architectural beauty that will take your breath away and capture your heart. A superb modern family home or luxury downsizer with 3 bedrooms plus study and 2 living zones, perfectly located on the perimeter of the Highlander estate with a short stroll to the beach along Deep Creek reserve.

The master bedroom at the front of the home includes a huge feature window and on trend timber wall panelling, a large walk in robe and stylish ensuite with minimalist concealed cistern toilet.

The flowing living and dining zone with elevated ceilings and clever highlight windows presents a voluminous space that blends seamlessly with outdoor entertaining and the undercover

**Price:** \$1,300,000 - \$1,400,000

**Property Type:** House

**Land:** 414 m2

# HAYDEN

**Kieran O'Dwyer**

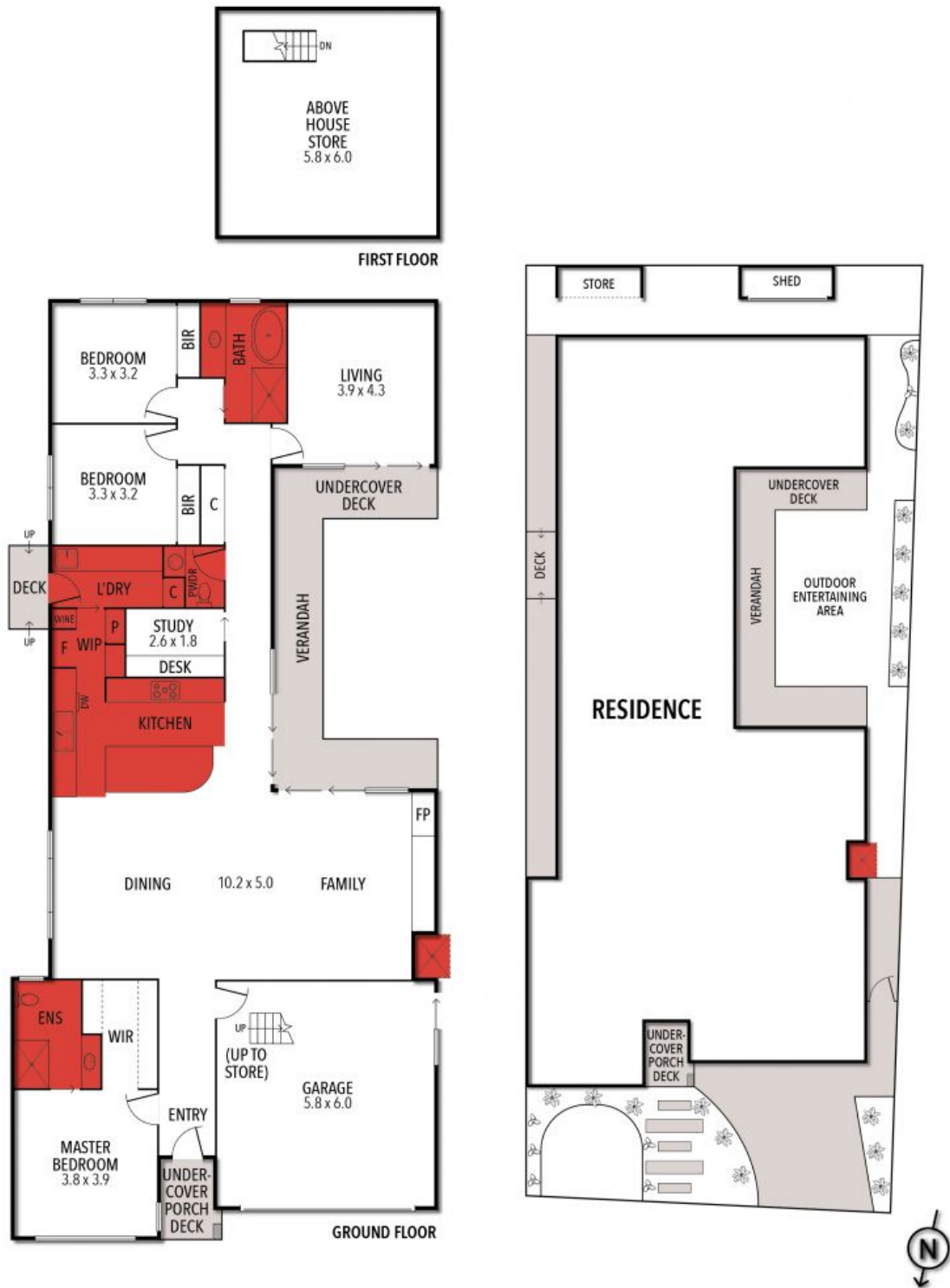
0409332381

kierano@hayden.com.au

**Ben Smith**

0423050825

bens@hayden.com.au



THE ABOVE PLAN IS AN ARTIST'S IMPRESSION ONLY, IT INCLUDES ELEMENTS THAT ARE FOR DISPLAY PURPOSES ONLY AND MAY NOT BE TO SCALE. LANDSCAPING SHOWN IS INDICATIVE ONLY. DIMENSIONS ARE APPROXIMATE.