



14 William Street LEOPOLD, VIC



5



2



2

A Leopold Gem With A Self-Contained Unit!

Featuring a self-contained unit, this property is the ultimate surprise package on approx. 689m²!

Boasting independent access, the self-contained unit will instantly appeal to home business owners and family members who enjoy their independence. Complete with a kitchenette, ensuite and built-in robes, this space could also appeal to those looking to join the Airbnb community.

Price: \$600,000 - \$650,000

Property Type: House

Land: 689 m²

HAYDEN

Karen Purcell

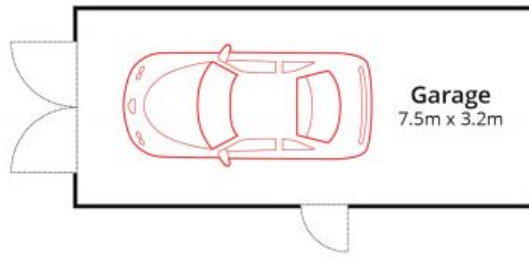
0448510143

karenp@haydenleopold.com.au

David Pemberton

0419874029

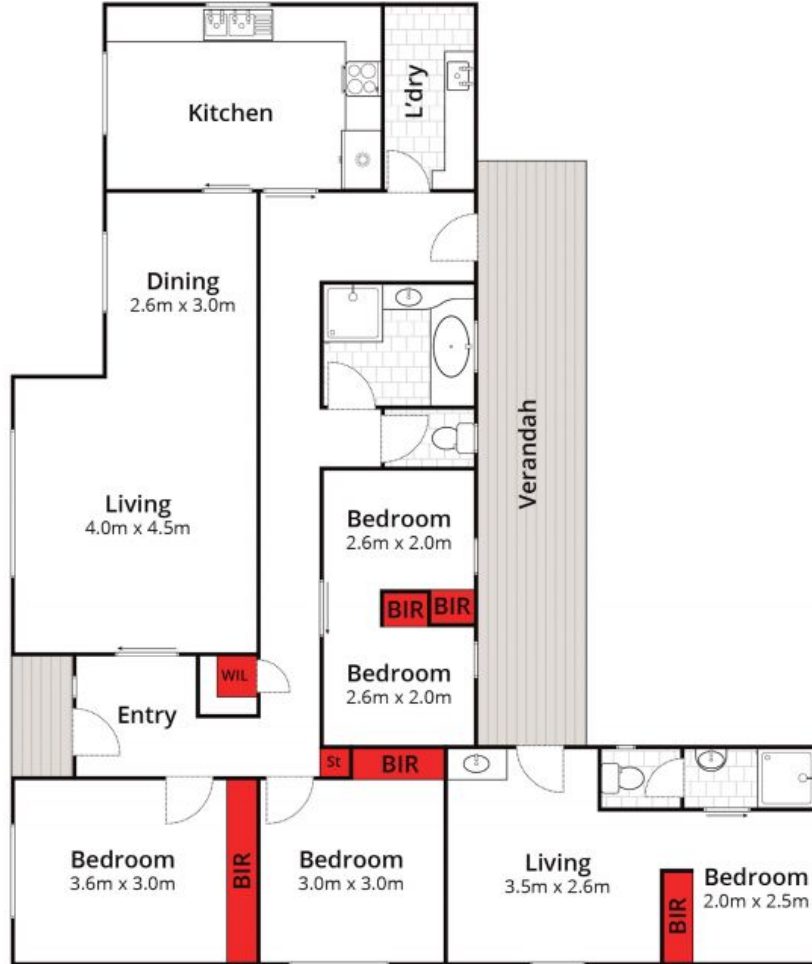
david@haydenleopold.com.au



(Not In Position)



(Not In Position)



Whilst bwrn.com.au has made every attempt to ensure the accuracy of the floor plan contained here, measurements are approximate and no responsibility is taken for any error, omission, or mis-statement. This plan is for illustrative purposes only.



14 William Street, Leopold

HAYDEN