



20 Carroll Street LEOPOLD, VIC



3



1



1

Ready To Make Your Own!

Don't miss this chance to secure a one-owner home within walking distance to the Ash Road shops! Whether you plan to move straight in or transform the property into your dream family haven (STCA), you'll need to act swiftly to avoid disappointment.

Three large bedrooms with built-in robes are serviced by the bathroom, while the laundry and separate toilet complete the layout. A split-system air conditioner provides comfort. The long driveway and carport provide plenty of off-street parking.

This quiet location promises to elevate your lifestyle in a heartbeat. The Ash Road shops take care of your morning coffee and everyday essentials, while Leopold Kindergarten and Leopold Primary School are also within walking distance for young families. The Gateway Plaza is conveniently close by, while the Bellarine Highway keeps you connected to the Bellar

Price: \$575,000 - \$595,000

Property Type: House

Land: 755 m2

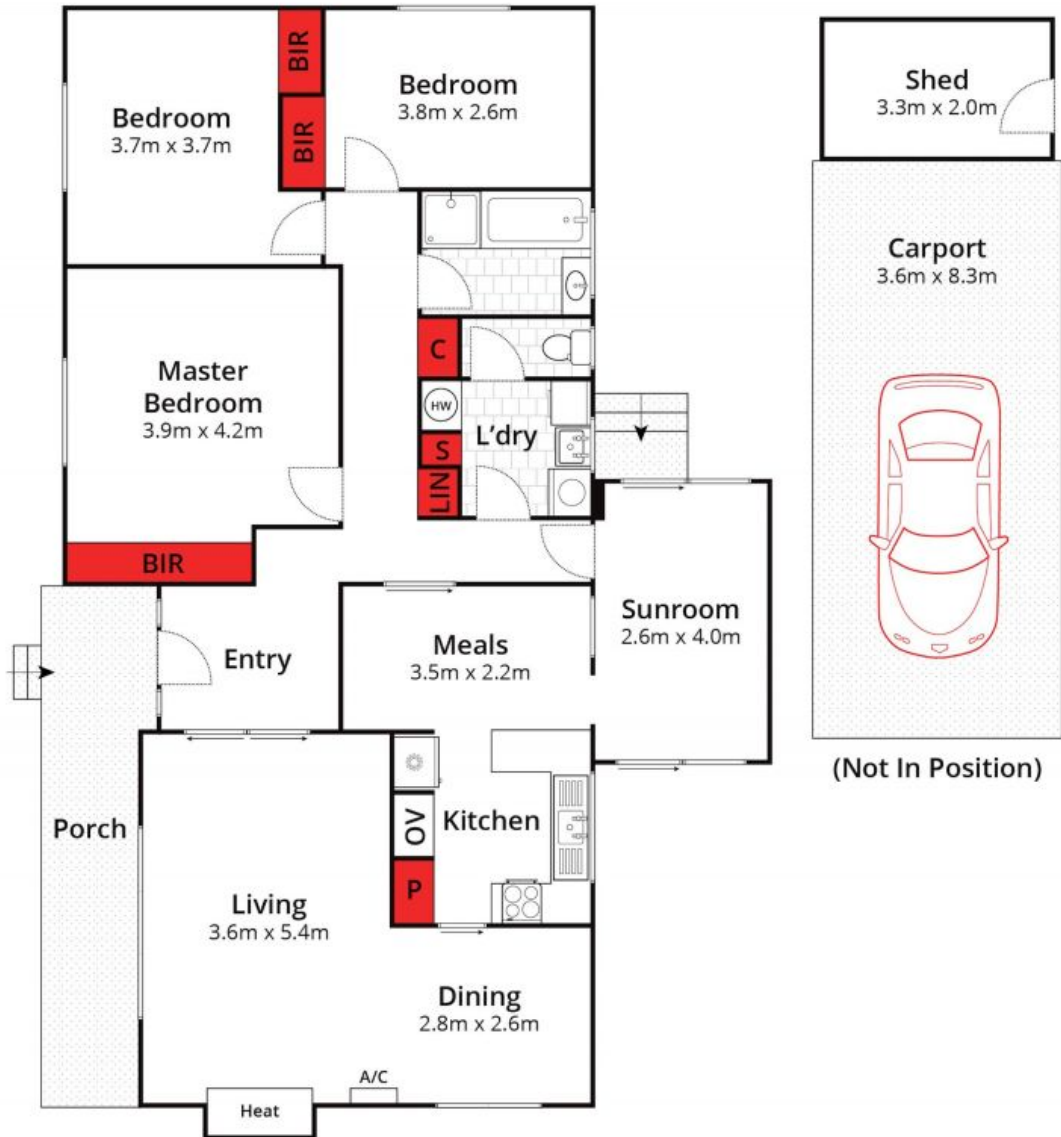
HAYDEN

David Pemberton **Karen Purcell**

0419874029

0448510143

david@haydenleopold.com.au karenp@haydenleopold.com.au



Whilst bwrn.com.au has made every attempt to ensure the accuracy of the floor plan contained here, measurements are approximate and no responsibility is taken for any error, omission, or mis-statement. This plan is for illustrative purposes only.

20 Carroll Street, Leopold

HAYDEN

20 Carroll Street

LEOPOLD, VIC