



2 Sparrow Avenue ANGLESEA, VIC



3



1



2

Coastal Charmer In Quiet Pocket

Tucked away in a quiet leafy pocket, within easy distance to the National Park, access to the golf course and close to handy short cut routes to the beaches, 2 Sparrow Avenue is a coastal charmer with solid bones and a world of opportunity.

This 3 bedroom home enjoys a generous street setback with striking natural landscaping on the large 821sqm block, providing a lovely sense of privacy, and also practical car parking spaces. White raked ceilings and timber wall panelling throughout beautifully capture beachside vibes.

The open plan living, dining and kitchen hub to the rear of the home is cleverly zoned to create separate living spaces with sweeping views across the backyard featuring a stand out outdoor entertaining area. Wrapping around the home and connecting to the side verandah this outdoor zone creates a plenitude of protected options to enjoy the sunshine from dawn til dusk. Built in BBQ space, outdoor fireplace, extensive concrete and brick paving, ext

Price: \$1,175,000-\$1,275,000

Property Type: House

Land: 821 m2

HAYDEN

Darcy Bennett

0468427359

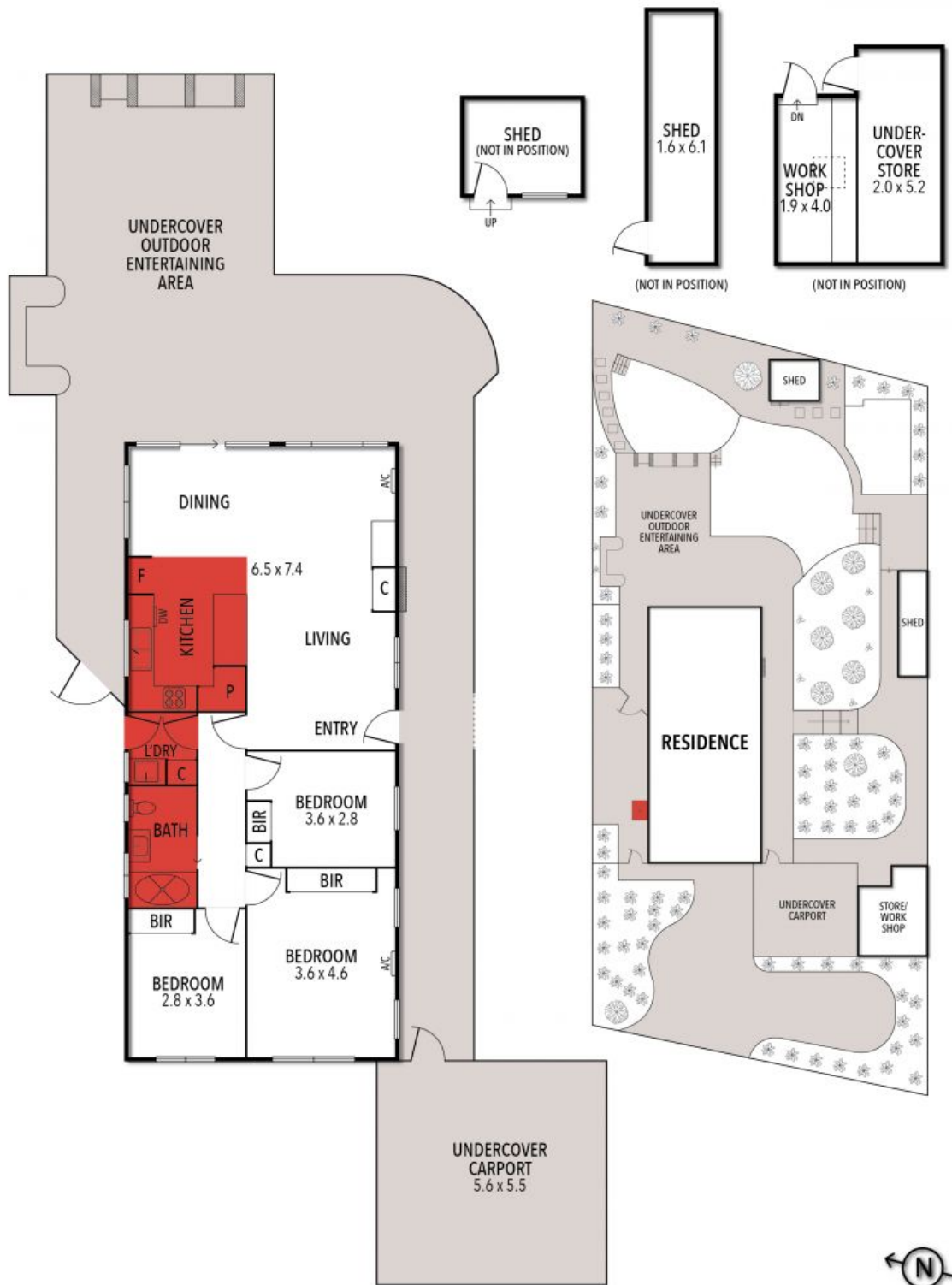
darcyb@hayden.com.au

Bryan Hayden

0417613250

bryanh@hayden.com.au

2 SPARROW AVENUE, ANGLESEA



THE ABOVE PLAN IS AN ARTIST'S IMPRESSION ONLY, IT INCLUDES ELEMENTS THAT ARE FOR DISPLAY PURPOSES ONLY AND MAY NOT BE TO SCALE. LANDSCAPING SHOWN IS INDICATIVE ONLY. DIMENSIONS ARE APPROXIMATE.