



30 Recreation Drive LEOPOLD, VIC



3



2



2

## Elegance & Space For The Whole Family!

Boasting direct access to the Memorial Reserve sporting grounds, this elegant residence creates a spacious haven for the whole family to enjoy!

Double doors open onto the spacious main bedroom, which creates a private retreat for busy parents. The recently renovated en suite showcases an open shower, while a walk-in robe and plantation shutters will delight.

**Price:** \$780,000 - \$820,000

**Property Type:** House

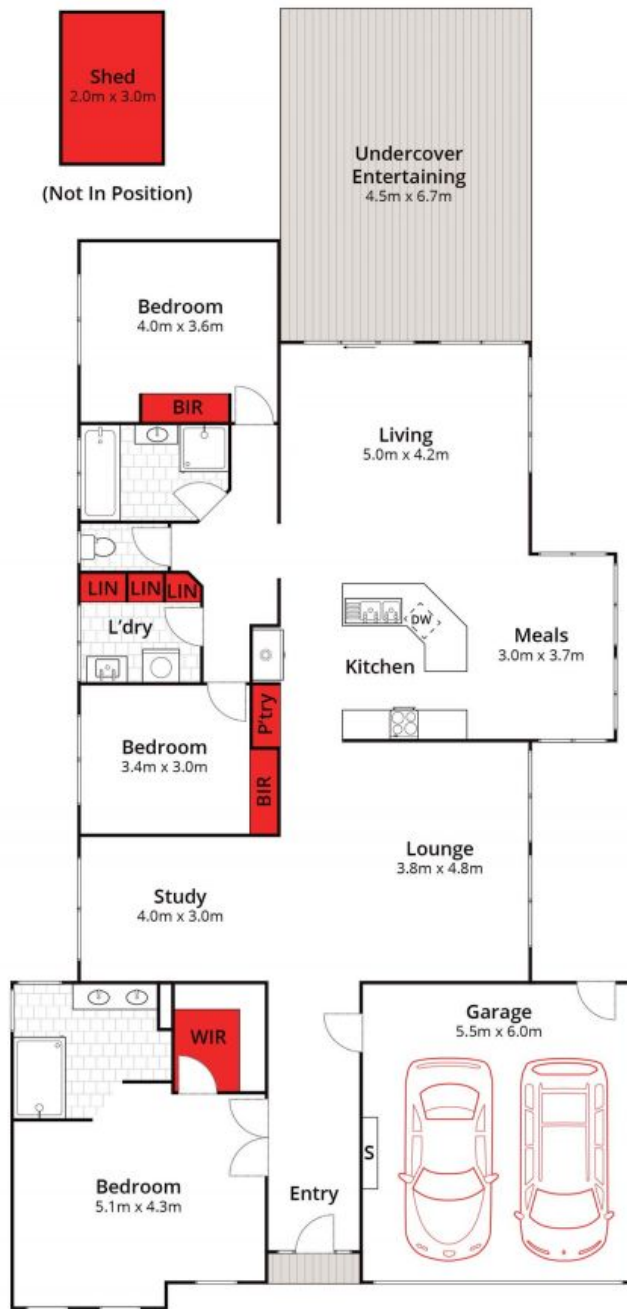
**Land:** 586 m2

# HAYDEN

**Karen Purcell**

0448510143

karenp@haydenleopold.com.au



Whilst [bwrn.com.au](http://bwrn.com.au) has made every attempt to ensure the accuracy of the floor plan contained here, measurements are approximate and no responsibility is taken for any error, omission, or mis-statement. This plan is for illustrative purposes only.



**30 Recreation Drive, Leopold**

**HAYDEN**

**30 Recreation Drive**

**LEOPOLD, VIC**