



1/796 Bellarine Highway Leopold, VIC



4



2



2

Charm & Character In The Heart Of Leopold!

As you step inside the front gate, you'll instantly fall in love with the sense of old-world charm. Soaring ceilings and polished floorboards enrich the interiors, with beautifully-retained period details including leadlight windows and decorative ceiling plaster. The front lounge overlooks the rose garden, while the open plan living/dining/kitchen zone creates the centrepiece of the home. The kitchen exudes rustic charm with timber cabinetry, a stainless-steel dishwasher and oven/gas cooktop.

Price: UNDER APPLICATION!

Property Type: House

Date Available: Saturday, 29th June 2024

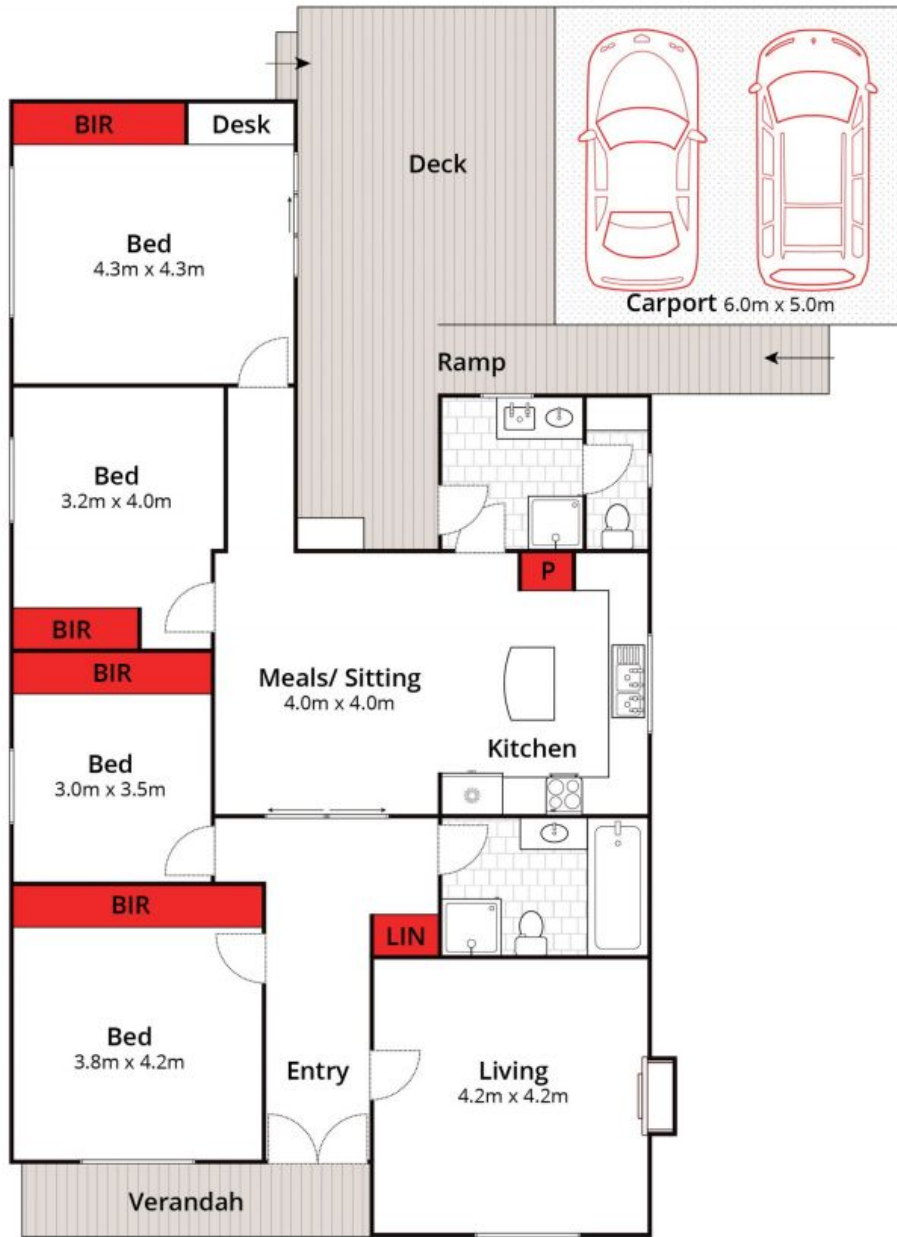
What more could you want apply today as this property will not last long!

HAYDEN

Deb Peek

5255 1000

deb@haydenoceanogrove.com.au



Whilst bwrn.com.au has made every attempt to ensure the accuracy of the floor plan contained here, measurements are approximate and no responsibility is taken for any error, omission, or mis-statement. This plan is for illustrative purposes only.

1/796 Bellarine Highway, Leopold

HAYDEN

1/796 Bellarine Highway

Leopold, VIC