



3A Elm Grove Court TORQUAY, VIC



3



2



2

Perfect Piece Of Paradise

If a quiet court location, ocean views and walking distance to all Torquay has to offer is appealing, this lovely home will impress. Immaculately presented and easy to live in, this is the perfect low maintenance lifestyle property everyone is looking for.

Spread over two levels the home is light filled, warm and welcoming. Careful consideration at the design stage has produced a practical layout with the emphasis on functionality. Room sizes and ceiling heights are generous. The private landscaped rear yard is perfect for entertaining or savouring the peaceful relaxing nature of the area.

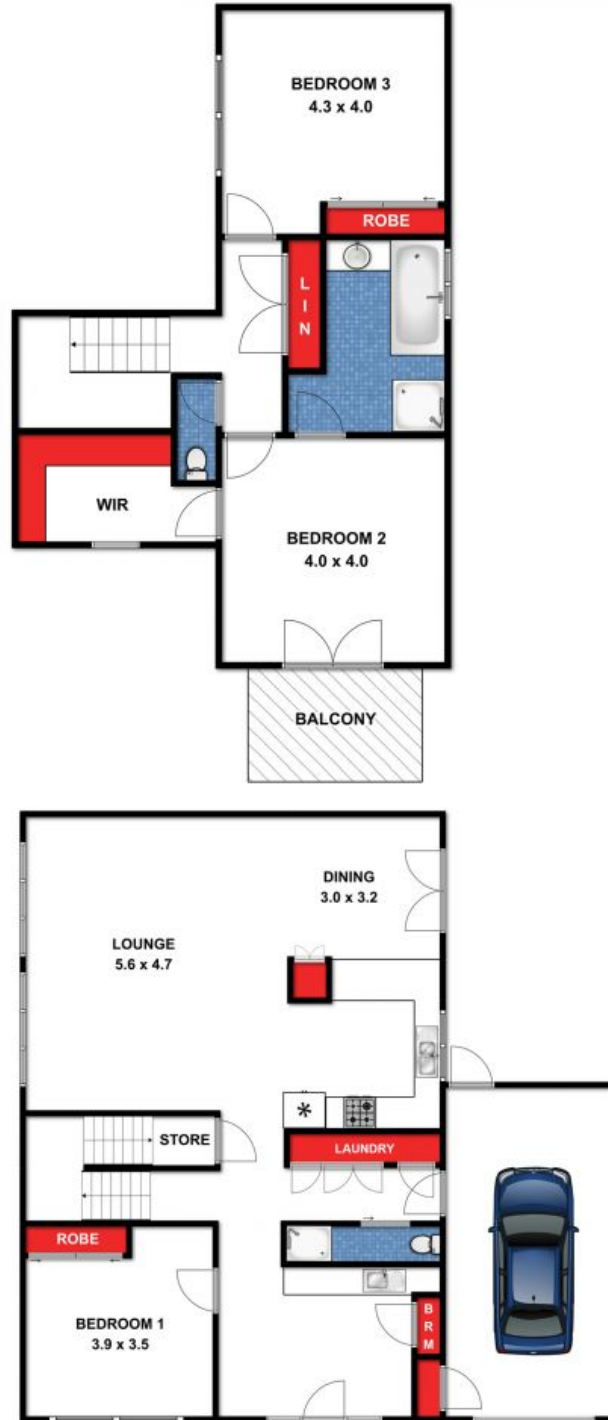
With the Deep Creek Reserve so close it is an easy and enjoyable walk to the beach. Public transport, local shops and the centre of Torquay are all walking distance.

Price: \$730,000
Property Type: House
Land: 301 m2



Hayden Real Estate -

Torquay
 samh@hayden.com.au



3A Elm Grove Court, Torquay



While every attempt has been made to ensure the accuracy of the floor plan contained here, measurements are approximate and no responsibility is taken for any errors, omissions or miss-statement. This drawing is for illustrative purposes only and should be used as such by any prospective purchaser. All dimensions stated are approximate and should not be taken as definite.